

Contractor Online Induction Guide

<http://www.lgiswa.com.au/home> Click on Link



Contractor Induction | LGIS WA - Windows Internet Explorer

http://www.lgiswa.com.au/contractor-induction

File Edit View Favorites Tools Help

https://s2.safe2.net/dylor/... Contractor Induction | L...

LGIS

Home Insurance Broking Community Health Public Liability Property Risk Management WorkCare Contact Us

Members Section
To access the full range of information and services for LGIS members, please enter your username and password.

Username:

Password:

Log in

Forgotten your password, contact us. To register as a new user, use the registration form.

Aquatic Risk Management
Asset Management
Business Continuity Management
Climate Change

Contractor Induction

Local governments are committed to ensuring their contractors are kept safe while performing work, and also have a legal obligation to ensure that contractors are aware of the safety requirements of the local government. Each company performing work must complete a general induction, and to make this process as easy as possible, an online induction has been developed. Please proceed to the **Contractor Induction** or view the **Contractor Induction presentation**

For further details please view our **Frequently Asked Questions document**.

For technical queries please contact support@myosh.com or the MYOSH User Guide is available for viewing.

Click Here

https://s2.safe2.net/dylor/lgl/courses.nsf?Open&CKey=5555-89Q32M

Start Sent Items - Microsoft O... Data PR5 (F:) Contractor Induction ... Online Guide Induction ... Internet 100% 8:46 PM

Courses - Windows Internet Explorer

https://s2.safe2.net/dylor/lgl/courses.nsf/AnonForm?OpenForm&CKey=5555-89Q32M

File Edit View Favorites Tools Help

https://s2.safe2.net/dylor/... Courses

myosh

Welcome to the LGIS Contractor Induction Course **Cost \$9**

Please ensure your Pop-up Blocker allows access to s2.safe2.net, then enter your details.

ID: enter ID if supplied then click **Start Course**

Or if you have not been supplied with an ID then complete the following information

First Name:

Last Name:

Date of Birth: dd/mm/yyyy Telephone:

Company:

Address:

Town:

State: Post code:

Email:

Name of Local Government:

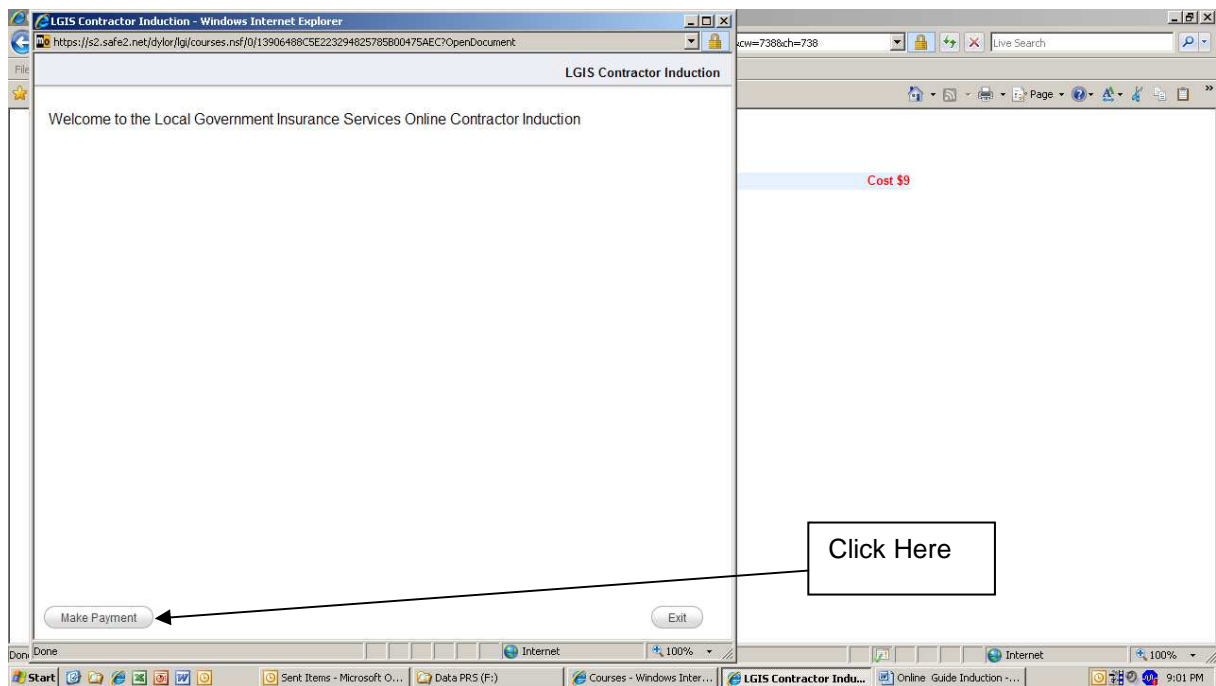
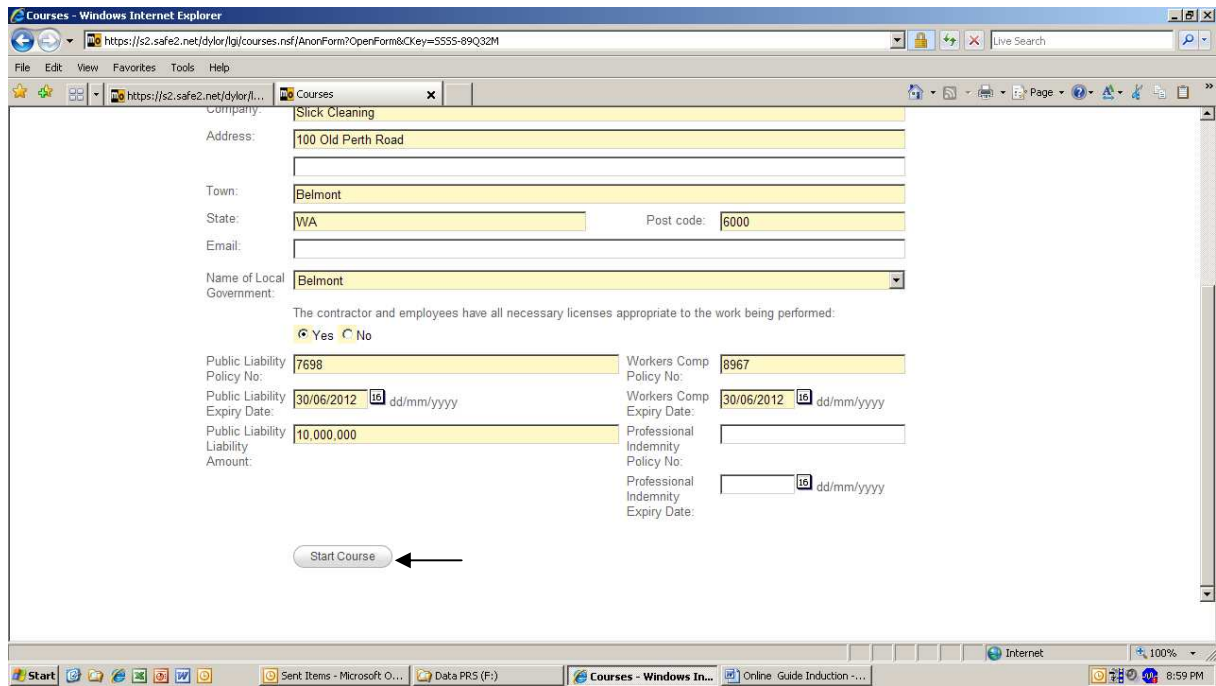
The contractor and employees have all necessary licenses appropriate to the work being performed:
 Yes No

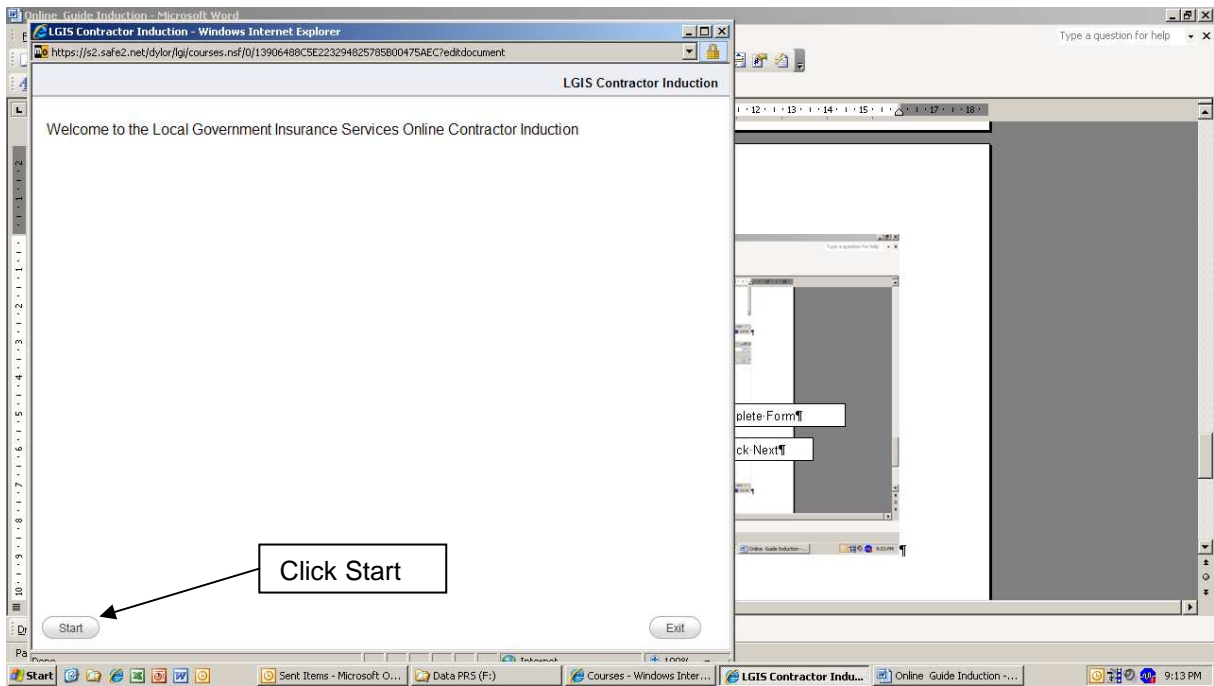
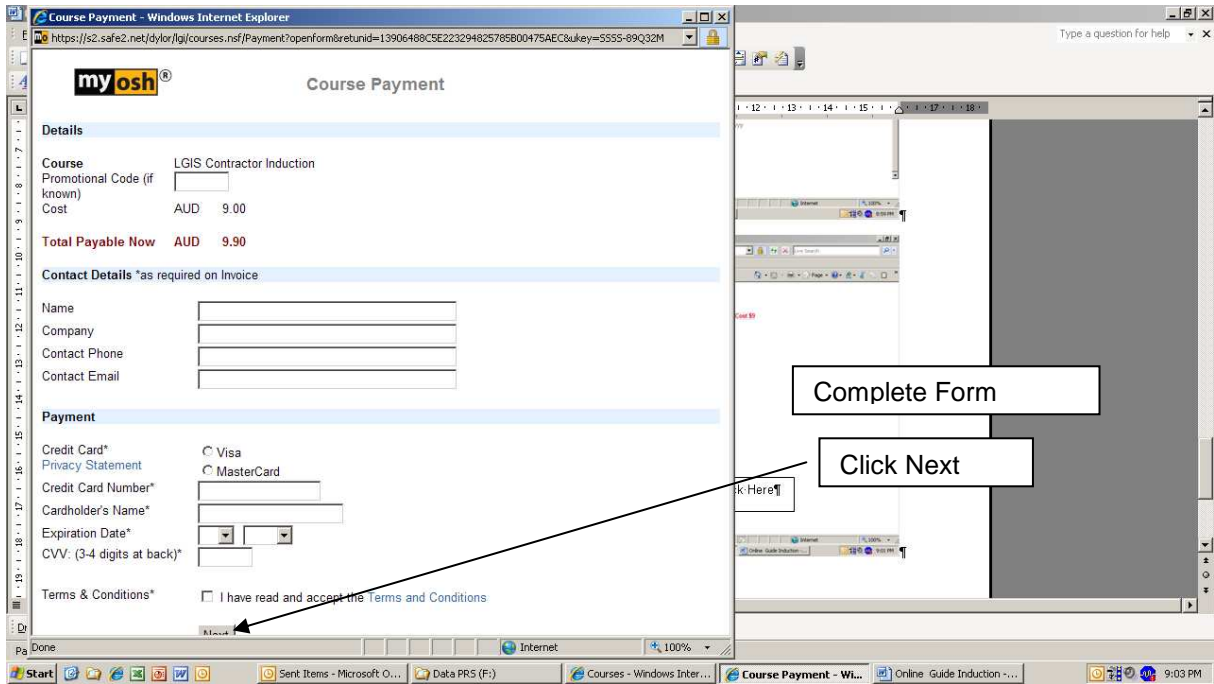
Public Liability: Workers Comp:

Complete Form

Done

Start Sent Items - Microsoft O... Data PR5 (F:) Courses - Windows In... Online Guide Induction ... Internet 100% 8:49 PM






Online Guide Induction - Microsoft Word


LGIS Contractor Induction - Windows Internet Explorer

https://s2.safelink.net/dykor/lga/courses.nsf/0/33D5091B946A49CF4825785B00487CF1?edkdocument

LGIS Contractor Induction: Page 1/35 - Introduction



Local Government Contractors' Induction Program



Contractors as Team Members
Enhancing our Duty of Care

Commence Course

Start | Sent Items - Microsoft O... | Data PRS (F:) | Courses - Windows Inter... | LGIS Contractor Indu... | Online Guide Induction ... | 9:14 PM